



October, 2017

Dear Parishioners and Friends of Saint Nicholas Cathedral,

Greetings in our Lord and Savior, Jesus Christ!

We are very happy to announce that we have now finalized our plans and are kicking off our capital campaign to pay off the Restoration Mortgage. Retiring our mortgage will not only ensure the financial stability of St. Nicholas for the foreseeable future but will free up money to make needed repairs and provide funds for our ongoing ministries. As of October, 2017, our mortgage principal was \$453,467.

The campaign's goal is to pay off our mortgage over the next 18 months, by April 15, 2019. *The pledge period will extend from now until the end of January, 2018.* The plan is for all pledges to be completed by April 15, 2019, the date the mortgage will be retired. During the campaign period, all contributions will be immediately paid toward the mortgage principal.

We will use engraved pavers to acknowledge our donors and their loved ones, and to also beautify the parklet side of our property. The cross over The Royal Doors of Saint Nicholas is the inspiration for the paver design.

Enclosed are the following items explaining the pledge program, the paver design, and the forms for you to identify the names you want on your paver:

- The paver design and a color coded legend to select a paver by pledge level.
- Frequently Asked Questions on the capital campaign and pavers.
- Pledge form along with engraving information form for the names to be submitted for the pavers.

We sincerely request your support for this exciting and important project. It is a project, which will not only pay off the mortgage, but will also pay tribute to loved ones both living as well as to those who have passed. If you have any questions, please do not hesitate to contact a member of the committee.

Yours in Christ,

Rev. Fr. Christopher Bender
Dean

Dean Panagulis
President, Parish Council

Alexandra Davides
Co-Chair, Countdown to Zero

John Frentzos

Treasurer, Parish Council

Peter Tsudis

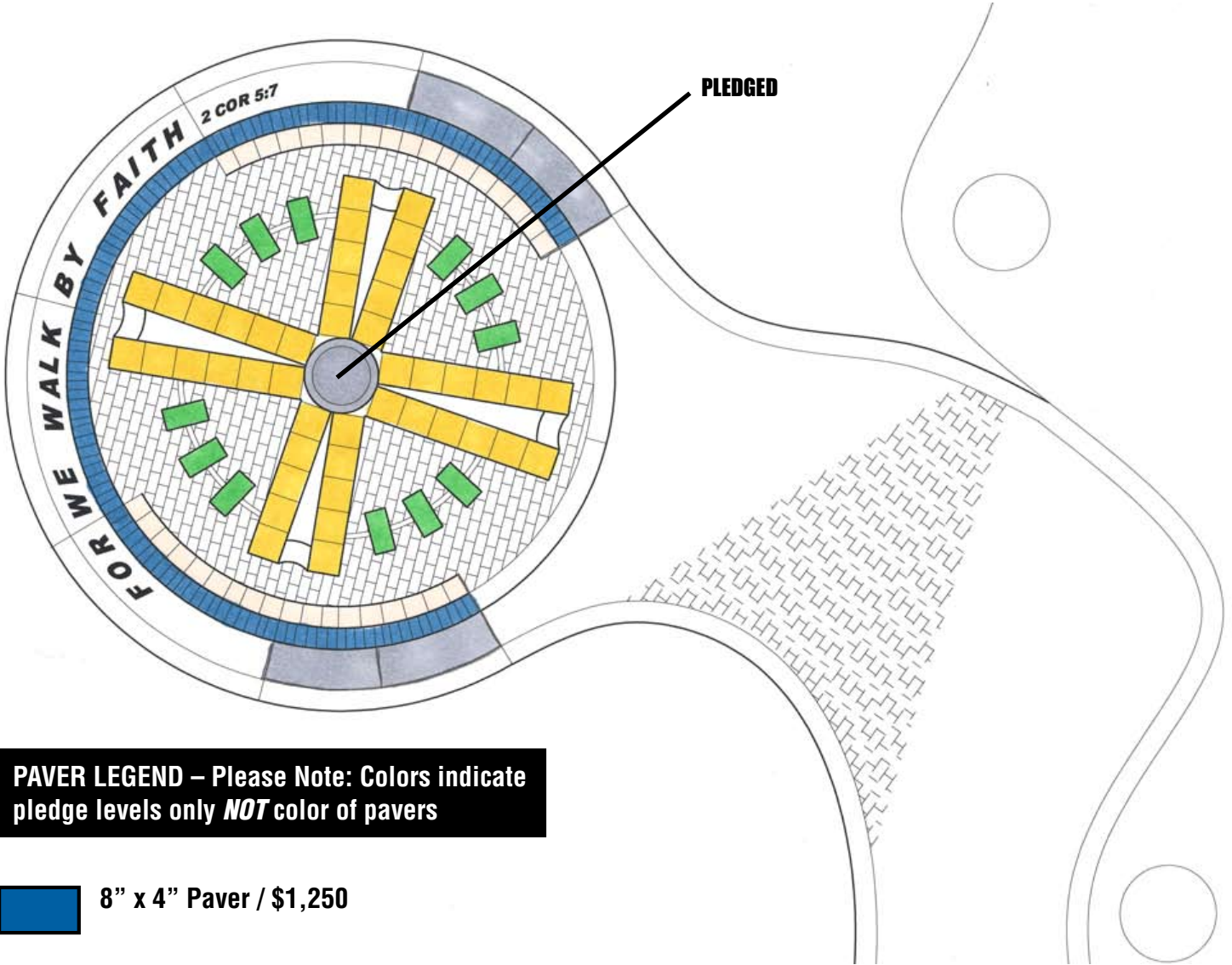
Co-Chair, Countdown to Zero

Committee:

Victor Bertolina • Vasili Copetas • Taki Darakos • James D. Machin
Marcie McGuire • Sophia Panagis • Gus Stamooolis • Tulla Velisaris








Parklet Area Site Plan / Overall Circle 20' Diameter

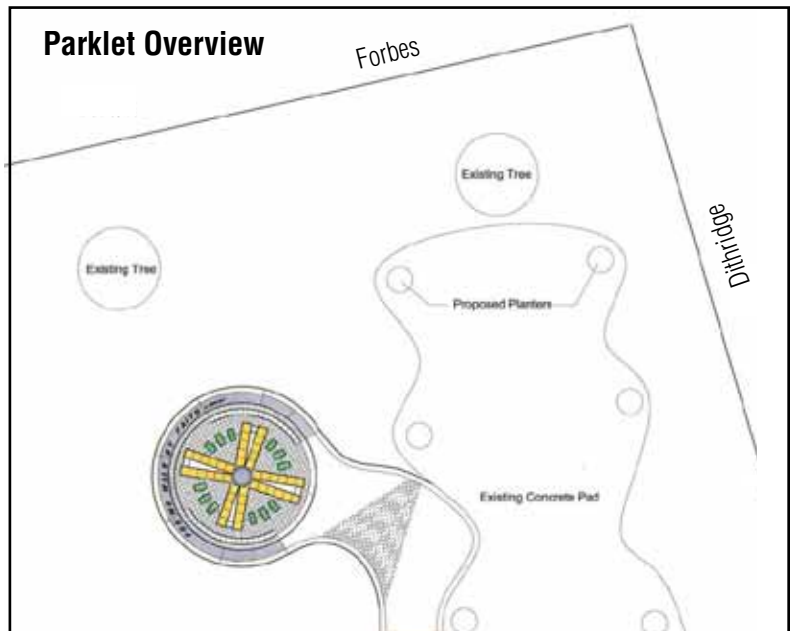
(Not to scale)



Design Maria Velisaris Coutris

PAVER LEGEND – Please Note: Colors indicate pledge levels only *NOT* color of pavers

-  8" x 4" Paver / \$1,250
-  8" x 8" Paver / \$2,500
-  12" x 12" Granite Paver / \$5,000
-  16" x 8" Granite Paver / \$10,000
-  42" x 15" Exterior Granite Ring - \$25,000 (ea). *Four sections available. Two on each side of Bible verse.*
-  28" Granite Center Circle / \$25,000 **PLEGED**
-  Area for Future Paver Donations



Frequently Asked Questions

What is the goal of the project?

The goal is to retire the St. Nicholas Cathedral mortgage by April 2019.

What do the proceeds benefit?

The proceeds will immediately be applied to the principal of mortgage. This provides an immediate impact by reducing interest payments.

How can I participate in this project?

You can make a donation and receive a paver engraved with you and/or your family's name or engraved as a memorial.

How do I order a paver?

Fill in the enclosed pledge and order form. The form includes the details of how you want your paver to be recorded. Return the form with your donation or initial payment toward your pledge.

What are the donation levels and materials used?

8" x 4" Paver / \$1,250

8" x 8" Paver / \$2,500

12" x 12" Granite / \$5,000

16" x 8" Granite / \$10,000

42" x 15" Exterior Granite Ring / \$25,000 per section. *Four sections available. Two on each side of Bible verse.*

Circular Granite Centerpiece / \$25,000 (*pledged*)

Is there a meaning to the donation levels?

The donations are based on the monthly payments of the St. Nicholas mortgage. A month's mortgage payment is about \$10,000. So the donations represent paying a month, two weeks, a week, or half week of our mortgage.

Are all donations to Countdown to Zero tax deductible?

Yes, pavers are tax deductible to the fullest extent of the law. All gifts are made payable to St. Nicholas Cathedral Building Fund, a 501(c)(3) non-profit organization.

Will I own the Paver?

You are making a gift to St. Nicholas Cathedral. The pavers will belong to St. Nicholas.

How can I be sure that the text on the paver will be correct?

When you place your order, you will receive acknowledgment that includes a verification of the engraved text. If something is misspelled or listed incorrectly, you will have an opportunity to correct it, in writing, before the engraving takes place.

What payment options are available?

You can make your donation by check. The period to complete your pledge is from now to April 2019. You can time your payment or payments to fit your needs.

Can I gift stock to Countdown to Zero?

Yes, the committee can arrange for the transfer of your shares and credit your donation as the fair market value of the stock.

When will the pavers be installed?

There will be a dedication and ribbon cutting event in the fall of 2018. As payments are completed, pavers will be added.

Can I make a family donation?

Yes, but the wording on the pavers must meet the character limitations on the form.

May organizations make a donation for a paver?

Yes. We ask only that only the group's name be listed.

May I/we put anything on the paver?

The contents must be appropriate for the church, Fr. Chris and the committee will review listings. You may use English or Greek on your paver.

Can I make a donation without getting a paver?

Yes, all donations against the mortgage are welcome.

May I split my donation over several pavers?

Yes, though depending on donor level.

Are additional forms available?

Yes, you may copy the blank form. Order forms are also available in the Narthex, the church office and on the church website www.stnickspgh.org

How is the location of each paver determined?

The paver location will be determined on a first come pledge received basis.

Where did the design come from?

Maria Velisaris Coutris created the design. Her inspiration comes from the cross over the Royal Doors in our Cathedral.

What is the cost of the pavers and their engraving?

The cost is modest; only about 5% of the funds raised. The installation cost will be donated.

How will the design hold up over time?

The materials selected should hold up into the next century. The foundation underneath the brick will be designed to last a century.

Will the presence of the paver design effect the Food Festival?

No, the tent arrangement will not change for this. The design will be covered for protection.

What happens to donations if Countdown to Zero raises more funds than necessary to retire the mortgage?

Excess donations would remain in the St. Nicholas Building Fund to be used for upcoming facility needs such as roof repairs or light fixture modernization in the sanctuary.

For additional information, please do not hesitate to contact a member of the committee:

Victor Bertolina	Vasili Copetas	Alexandra Davides	Taki Darakos
John Frentzos	Jim Machin	Marcie McGuire	Sophia Panagis
Dean Panagulis	Gus Stamoolis	Peter Tsudis	Tulla Velisaris



Commemorative Paver ORDER FORM

Yes, we/I would like to donate a paver to help burn our mortgage.

Please check desired paver size:

_____ 8" x 4" Paver / \$1,250

_____ 8" x 8" Paver / \$2,500

_____ 12" x 12" Granite Paver / \$5,000

_____ 16" x 8" Granite Paver / \$10,000

_____ 42" x 15" Exterior Granite Ring / \$25,000. *Four sections available. Two on each side of Bible verse.*

28" Granite Center Circle (has been pledged)

Donor Name _____ I wish to remain Anonymous

Address _____

Phone _____

Total number of pavers pledged _____ Total amount pledged \$ _____

I do not wish to purchase a paver but here is my donation \$ _____

Payment Options:*

Paid in Full \$ _____ Initial Payment \$ _____

Your plan for additional payments \$ _____ Quarterly \$ _____ Monthly \$ _____ Other

*** PLEASE NOTE: Your paver will not be engraved until pledge has been paid in full**

